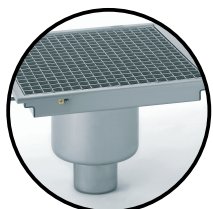


# FLOOR DRAINS

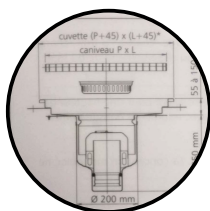
The  
Tournus  
assets



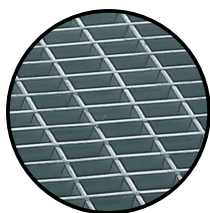
**Wide range :** 280 standards models with adjustable bowl or single-piece bowl, vertical or horizontal outlet and center or off-center outlet.



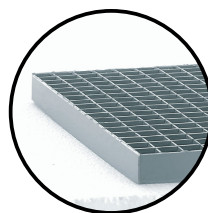
**Security :**  
Garantie décennale :  
press-drawn with no weld.  
Power supply : equipotential  
bond.



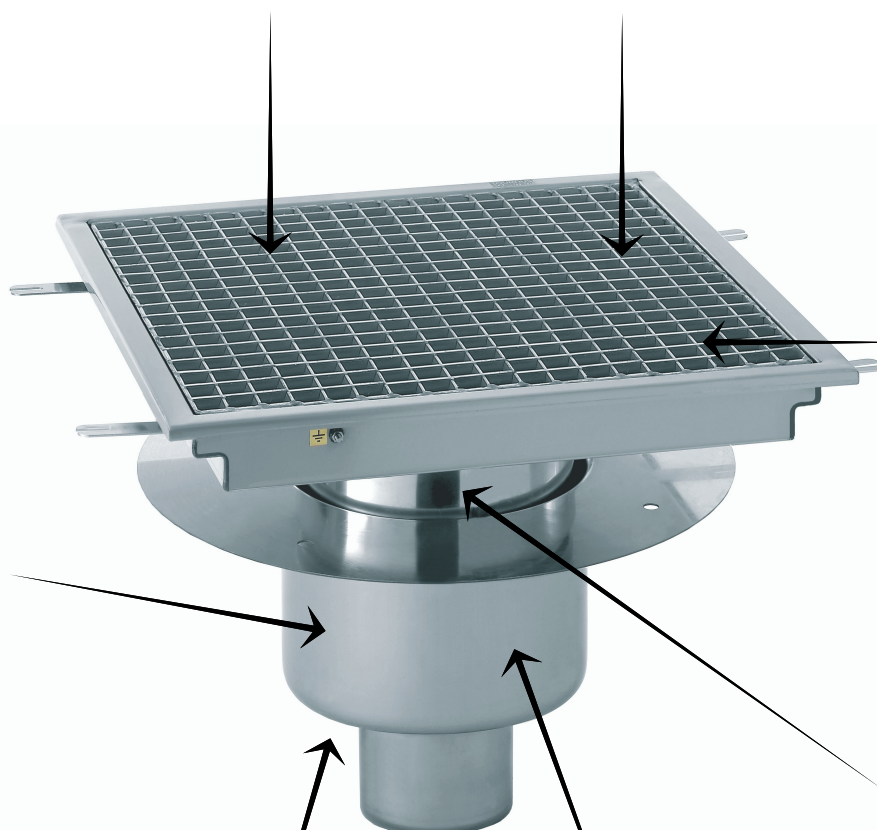
**Small reserve holes :** No  
recess is required in the  
concrete slab flooring to  
install vertical drain systems.  
A reserved hole or core  
drilling of Ø 225 mm suffices.



**Practical :** The mesh size of  
the gratings is 19 x 19 mm, for  
easy passage of trolleys.



**Robust :**  
- distributed load : 3 t/m<sup>2</sup>  
- concentrated load : 750 kg



**Option :** stainless grating  
non-slip



**High throughput :**  
4 litres per second.



**Easy cleaning :**  
- removable siphon with O-ring to  
make the cleaning easier.  
- standard off-center outlet to make  
the access easier under the frying  
pans and stationary kettles.



**Protection against bad smells :**  
the depth of water is 60 mm.

